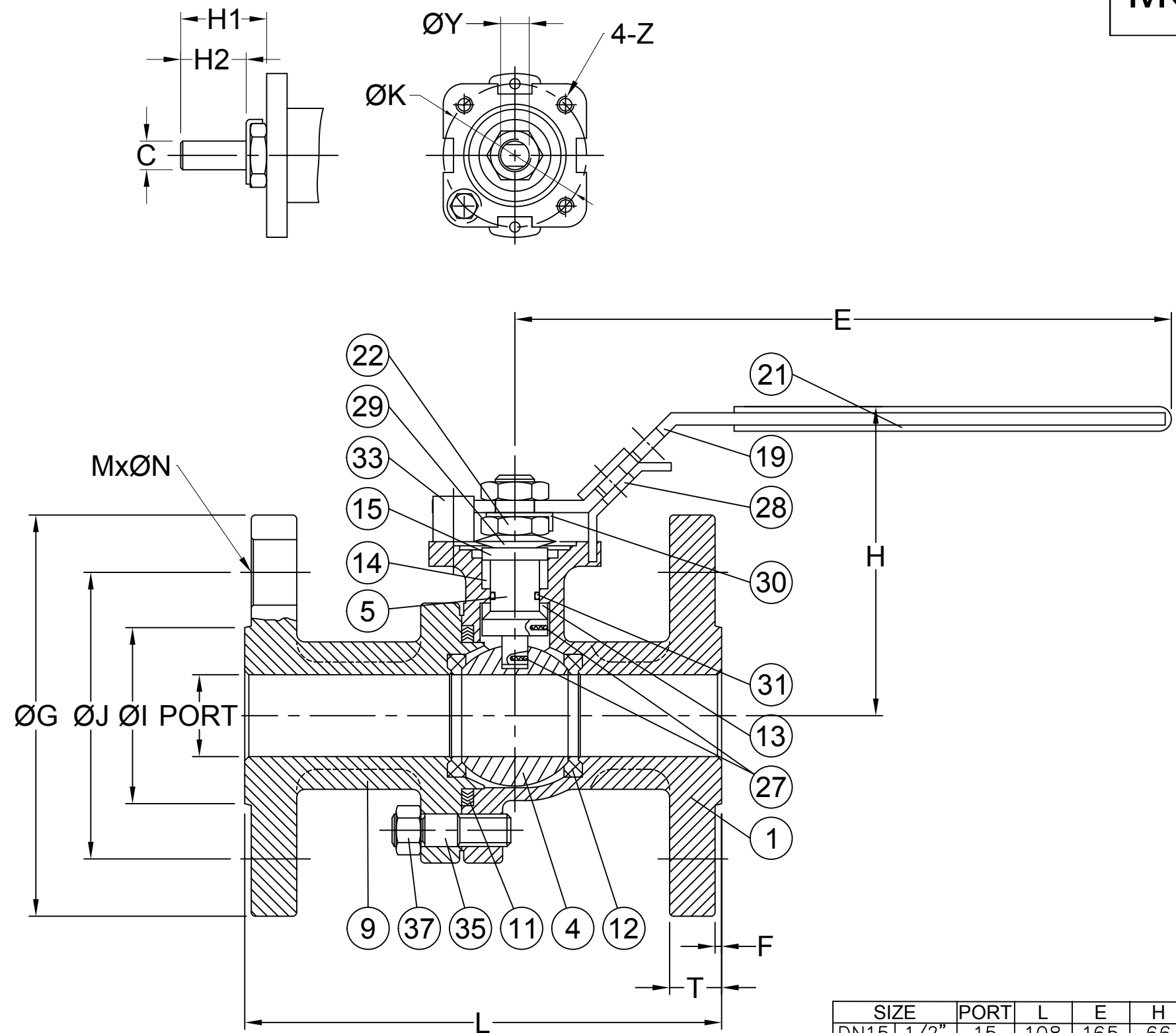


# MODEL: 2 Piece Flanged Ball Valve

## MATERIAL LIST

NO.	PART NAME	MATERIAL
1	BODY	ASTM A494 CW12MW
4	BALL	ASTM A494 CW12MW
5	STEM	ASTM A574 UNS N10276
9	END CAP	ASTM A494 CW12MW
11	BODY SEAL	PTFE
12	SEAT	RTFE
13	THRUST WASHER	PTFE
14	STEM PACKING	PTFE
15	GLAND BUSH	SS304
19	HANDLE	SS304
21	HANDLE COVER	PLASTIC
22	STEM NUT	SS304
27	ANTI-STATIC DEVICE	SS316
28	LOCKING DEVICE	SS304
29	BELLEVILLE WASHER	SS301
30	TAB WASHER	SS304
31	O-RING	VITON
33	STOP PIN	SS304
35	STUD	ASTM A193 Gr.B8
37	BOLT NUT	ASTM A194 Gr.8



## DIMENSIONS

unit:mm

SIZE	PORT	L	E	H	H1	H2	C	ØY	ØG	ØJ	ØI	T	F	M	ØN	ØK	Z	
DN15	1/2"	15	108	165	66	14	8	6.35	9.3	89.0	60.0	35.0	11.2	1.6	4	16	42	M5
DN20	3/4"	20	117	165	74	14	8	6.35	9.3	98.0	70.0	43.0	12.7	1.6	4	16	42	M5
DN25	1"	25	127	200	87	19	11	8.0	10.9	108.0	79.5	51.0	14.3	1.6	4	16	50	M6
DN32	1-1/4"	32	140	200	92	19	11	8.0	10.9	117.5	88.9	64.0	15.9	1.6	4	16	50	M6
DN40	1-1/2"	38	165	250	105	23	14	9.5	15.7	127.0	98.5	73.0	17.5	1.6	4	16	70	M8
DN50	2"	50	178	265	115	23	14	9.5	15.7	152.0	120.5	92.0	19.1	1.6	4	19	70	M8

CODE	D82		DRAWN	ROBIN	UNIT	mm	BODY	CF8M	PIECE	TWO	SN	N/A
 <b>MODENTIC</b> INDUSTRIAL CORPORATION	CHECKED	FRED	SCALE	FREE	SEAT	RPTFE	VALVE	BALL	CONNECTION	FLANGED END		
	APPROVED	ELMA	REVISION	02	FIRE SAFE	N/A	BORE	FULL	OPERATION	LEVER		
	DATE	2019/02/15	NOTE		PORT	2-WAY	TYPE	NORMAL	PRESSURE	CLASS 150		